

Alma Road, Esher, KT10 8JW



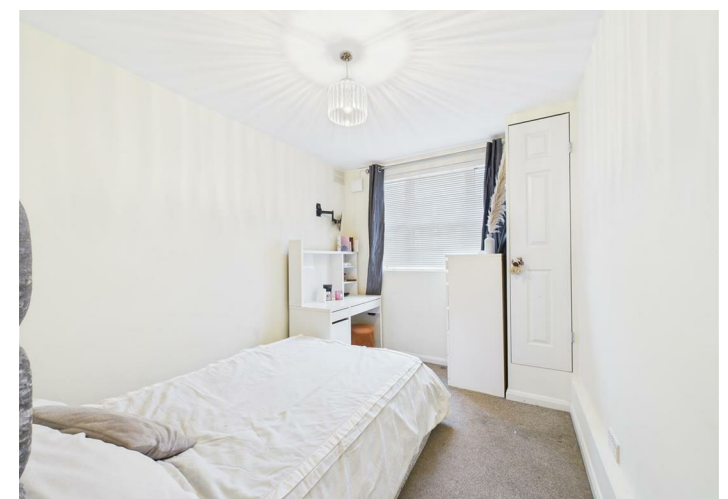
Offers In Excess Of £350,000 Leasehold - Share of Freehold

We are pleased to offer this two bedroom ground floor apartment which is situated within a short distance of both Esher and Thames Ditton mainline stations. The property is presented in good order throughout and briefly comprises entrance hallway, bright double aspect living room with open plan kitchen with fitted appliances, two double bedrooms and a white bathroom suite, externally the property also benefits from its own private enclosed court yard patio area. Viewings strongly recommended at your earliest convenience. Council tax band C.

Alma Road, Esher, KT10 8JW



- TWO DOUBLE BEDROOMS
- CLOSE TO MAINLINE STATIONS
- DOUBLE GLAZING
- MODERN KITCHEN WITH INTEGRATED APPLIANCES
- PRIVATE COURTYARD PATIO
- GAS CENTRAL HEATING
- BRIGHT OPEN PLAN DOUBLE ASPECT LIVING SPACE



This plan is a representation of the property and measurements, where given, are approximate. None of the fixtures and fittings have been tested by us. These details are thought to be materially correct but we cannot guarantee there are no error and emissions and they do not form part of any contract